

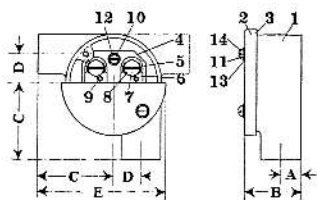
DIMENSIONS

Catalogue No.	B	E	F	J	K	M	N	O	P
TCAC-116.....	2 1/2"	3 3/8"	1 3/8"	2 1/2"	3 3/8"	4 13/16"	7"	5 3/4"	4 3/4"
TCAC-2212.....	2 13/16"	3 7/8"	1 5/8"	3 1/2"	4 1/2"	5 13/16"	8 3/4"	7 1/2"	3"
TCAC-2218.....	3 1/2"	4 1/2"	1 1/2"	3 7/8"	4 7/8"	6 1/16"	12"	10 3/4"	5 1/4"

Types TCAC-116, TCAC-2212 and TCAC-2218 Terminal Boxes

Part	ARTICLE	Type TCAC-116 Catalogue No.	Type TCAC-2212 Catalogue No.	Type TCAC-2218 Catalogue No.	List Price
1	Box (See notes below).....	TC-116-AC	TC-2212-AC	TC-2218-AC	Upon Application
2	Cover with Gasket.....	CTB-2	STB-5	RTA-2	"
3	Gasket.....	CTB-2-A	STB-5-A	RTA-2-A	"
4	Clamp Complete.....	LTB-4	LTB-4	LTB-4	"
5	Wing Nut.....	LTB-4-A	LTB-4-A	LTB-4-A	"
6	Washer.....	LTB-4-B	LTB-4-B	LTB-4-B	"
7	Stud.....	LTB-4-C	LTB-4-C	LTB-4-C	"
8	Washer.....	LTB-7-C	LTB-7-C	LTB-7-C	"
9	Adapter (See notes below).....	RSA-3-L	RSA-3-M	RSA-3-M	"
10	Gasket.....	RSA-3-A	RSA-3-A	RSA-3-A	"
11	Terminal Block Complete.....	TL-63	TL-63	TL-63	"
12	Insulation.....	SF-8-N	SF-8-N	SF-8-N	"
13	Long Stud.....	SF-9-M	SF-9-M	SF-9-M	"
14	Terminal Nut.....	SF-10	SF-10	SF-10	"
15	Lock Nut.....	SF-10-A	SF-10-A	SF-10-A	"
16	Jumper.....	SF-16	SF-16	SF-16	"
17	3/8" x 3/16" Button Head Copper Rivet.....				"
18	1" x 3/16" Button Head Copper Rivet.....				"
19	Lock Washer.....	3/8"	3/8"	3/8"	"
20	Lock Washer.....	8	8	8	"
21	Washer.....	LR-3-B	LR-3-B	LR-3-B	"
22	1/8" x 8-32 Round Head Brass Screw.....				"
23	3/4" x 1/2"-20 Round Head Brass Screw.....				"
24	1/2"-20 Hexagon Brass Nut.....				"
25	Washer.....	SFR-200-E	SFR-200-E	SFR-200-E	"

TCAC-226 is the same as TCAC-116 with TC-226-AC Box—3/4" x 3/4"—and RSA-3-M Adapter.
 TCAD-226 is the same as TCAC-116 with TC-226-AD Box—3/4" x 3/4"—and RSA-3-M Adapter.
 TCAC-3312 is the same as TCAC-2212 with TC-3312-AC Box—1" x 1"—and RSA-3-O Adapter.
 TCAD-2210 is the same as TCAC-2212 with TC-2210-AD Box—3/4" x 3/4", one TL-63 and one TL-42 Terminal Blocks.
 TCAC-3318 is the same as TCAC-2218 with TC-3318-AC Box—1" x 1"—and RSA-3-O Adapter.



DIMENSIONS

Cat. No.	A	B	C	D	E
ELT-1100....	5 5/8"	1 25/32"	2 3/8"	7/8"	4 1/8"
ELT-2200....	5 5/8"	1 31/32"	2 3/8"	7/8"	4 1/8"
ELT-111....	5 5/8"	1 25/32"	2 3/8"	7/8"	4 1/8"
ELL-1100....	5 5/8"	1 25/32"	2 3/8"	7/8"	4 1/8"
ELL-2200....	5 5/8"	1 31/32"	2 3/8"	7/8"	4 1/8"
ELLT-111....	5 5/8"	1 25/32"	2 3/8"	7/8"	4 1/8"

Type ELT-1100 Terminal Box

Part	Catalogue No.	ARTICLE	List Price
1	CF-11-D	Base 1/2" x 1/2" (See notes below).....	Upon Application
2	CF-2-B	Cover with Gasket.....	"
3	LR-53	Gasket.....	"
4	CF-20	Block with Terminals.....	"
5	CF-4	Insulation.....	"
6	LTB-7	Contact with Screws.....	"
7	LTB-7-A	Screw.....	"
8	LTB-7-C	Washer.....	"
9		3/8" x 6-32 Round Head Brass Screw.....	"
10		1/8" x 8-32 Round Head Brass Screw.....	"
11		1/2" x 12-32 Round Head Brass Screw.....	"
12	8	Lock Washer.....	"
13	12	Lock Washer.....	"
14	12	Retaining Washer.....	"

ELT-2200 Terminal Box is the same as ELT-1100 with CF-22-D Base—3/4" x 3/4".
 ELT-111 Terminal Box is the same as ELT-1100 with CF-111-TD Base—1/2" x 1/2" x 1/2".
 ELT-1100 Junction Box is the same as ELT-1100 with CF-11 Base—1/2" x 1/2"—but without Terminal Block.
 ELL-2200 Junction Box is the same as ELT-1100 with CF-22 Base—3/4" x 3/4"—but without Terminal Block.
 ELT-111 Junction Box is the same as ELT-1100 with CF-111-T Base—1/2" x 1/2" x 1/2"—but without Terminal Block.
 ELT-222 Junction Box is the same as ELT-1100 with CF-222-T Base—3/4" x 3/4"—but without Terminal Block.
 ELT-333 Junction Box is the same as ELT-1100 with CF-333-T Base—1" x 1" x 1"—but without Terminal Block.

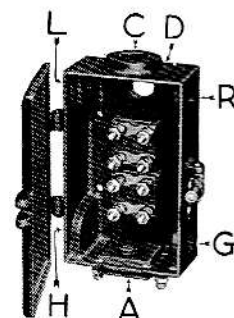
Type TC Terminal Boxes

Tapped as Specified

TYPE TC Terminal Boxes have a cast iron base and cast iron cover with gasket which overlaps the base. They are furnished with standard Type TL terminal blocks.

The hubs can be drilled and tapped in other locations than those listed if specified according to the letters shown on cut. A removable hub is furnished at location "A."

Six Terminal		
$\frac{1}{2}" \times \frac{1}{2}"$ TCAC-116 \$3.80	Size Catalogue No. List Price	$\frac{3}{4}" \times \frac{3}{4}"$ TCAC-226 \$4.00
Twelve Terminal		
$\frac{3}{4}" \times \frac{3}{4}"$ TCAC-2212 \$6.50	Size Catalogue No. List Price	$1" \times 1"$ TCAC-3312 \$6.70
Eighteen Terminal		
$\frac{3}{4}" \times \frac{3}{4}"$ TCAC-2218 \$9.60	Size Catalogue No. List Price	$1" \times 1"$ TCAC-3318 \$9.80



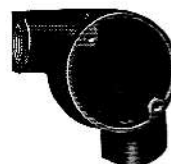
Terminal and Junction Boxes

TYPES ELL and ELT are weatherproof cast iron terminal and junction boxes with overlapping cover with gaskets. Covers are held in place with heavy screws with lock washers.

These boxes are designed for mounting on locomotive tender to make connection for wires from locomotive so that it is only necessary to replace short lengths of wire when renewing wires between locomotive and tender. They can also be used where an "L" fitting with ample wiring space is desired.

Type ELL fittings have ample wiring space for pulling in wires and making splices.

Type ELT fittings are furnished with terminal block consisting of two two-way terminals mounted on molded insulation. Terminals are of heavy cast brass with projecting ears to hold wires in place.



Types ELL
and ELT

Junction Boxes			
Type ELL		Type ELLT	
$\frac{1}{2}" \times \frac{1}{2}"$ ELL-1100 \$1.40	$\frac{3}{4}" \times \frac{3}{4}"$ ELL-2200 \$1.50	Size Catalogue No. List Price	$\frac{1}{2}" \times \frac{1}{2}" \times \frac{1}{2}"$ ELLT-111 \$1.50
Terminal Boxes			
Type ELT		Type ELTT	
$\frac{1}{2}" \times \frac{1}{2}"$ ELT-1100 \$2.10	$\frac{3}{4}" \times \frac{3}{4}"$ ELT-2200 \$2.20	Size Catalogue No. List Price	$\frac{1}{2}" \times \frac{1}{2}" \times \frac{1}{2}"$ ELTT-111 \$2.30



Types ELLT
and ELTT