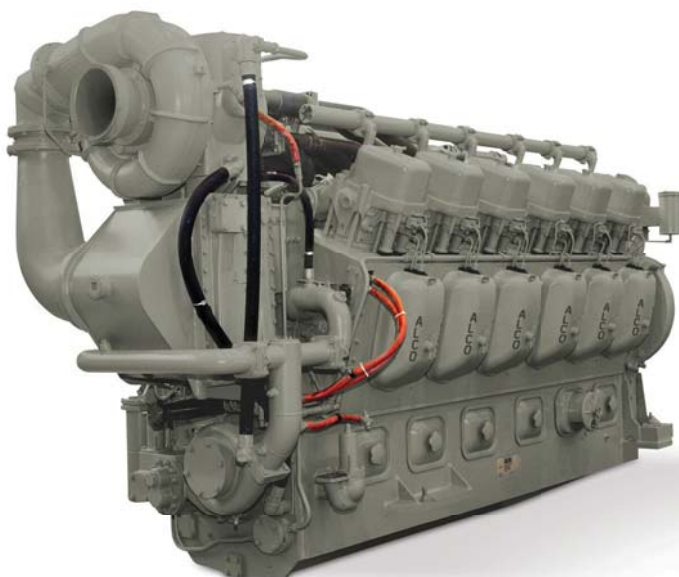


ALCO 251F DIESEL FUEL

ENGINES

Power Range 1,305 – 2,781 kWm

The ALCO 251F engine is universally recognized for its durability and reliability in the most demanding stationary and locomotive applications. This rugged 4-stroke engine option is available in 12- and 18-cylinder configurations and affords high specific output with low specific fuel consumption.



Applications

- Emergency Nuclear Reactor Cooling
- Power Generation
- Marine Propulsion
- Compression
- Pumping
- Emergency Power

Installations

- Nuclear Power Plants
- Water Management Facilities
- Marine Vessels
- Natural Gas Compressors
- Pump Drives
- Hospitals
- Municipalities
- Industrial Power Generation
- Locomotive

Key Advantages

- Strong, durable cylinder head casting for increased life of critical components
- Exceptional commonality of components
- Well established workhorse engine to accommodate multiple applications
- Known for reliability, high specific output and low specific fuel consumption
- Quality iron alloy makes cylinder head resist high temperatures and pressures

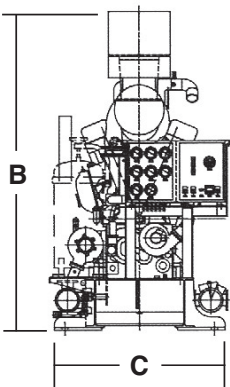
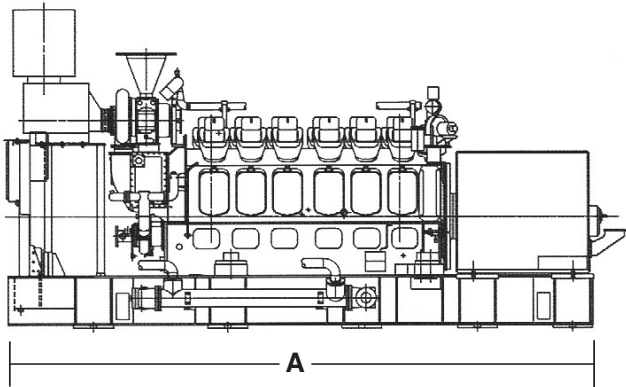
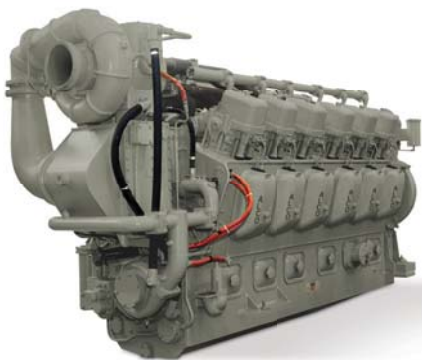
SPECIFICATIONS

Cylinder Configuration	12V, 16V	Displacement/Cylinder – L (cu in)	10.9 (668)
Cylinder Bore - mm (in)	229 (9.0)	Mean Piston Speed – m/s (ft/min)	6.4 – 10.7 (21.0 – 35.0)
Piston Stroke – mm (in)	267 (10.5)	BMEP - bar (psi)	15.8 – 16.7 (230 – 240)
Cycle	4 Stroke		



ALCO 251F

Power Range
1,305 – 2,781 kWm



Dimensions

CYL.	RPM	A mm (in.)	B mm (in.)	C mm (in.)	DRY WEIGHT KG (lbs)
12V	720- 1,200	8,573 (337)	3,486 (137)	2,692 (106)	25,400 (56,000)
16V	720- 1,200	9,712 (382)	3,486 (137)	2,692 (106)	34,100 (75,200)

Power Ratings

CYL.	50Hz 750 RPM kWe	50Hz 1,000 RPM kWe	60Hz 900 RPM kWe	60Hz 1,200 RPM kWe
12V	1,309	1,743	1,567	2,009
16V	1,743	2,324	2,091	2,676



an EnPro Industries company

701 White Ave
Beloit, WI 53511
800.356.6955
www.fairbanksmorse.com

NOTES

All ratings subject to factory approved application.
Ratings are based on:
90°F (32.2°C) ambient temp.
28.25 in Hg (71.6 cm Hg) barometric pressure (min)
1,500 ft. (457 m) altitude (max)
Standby ratings available
The kWe ratings are based on generators with nominal efficiencies of 96.2%.
For installations obtain certified prints.