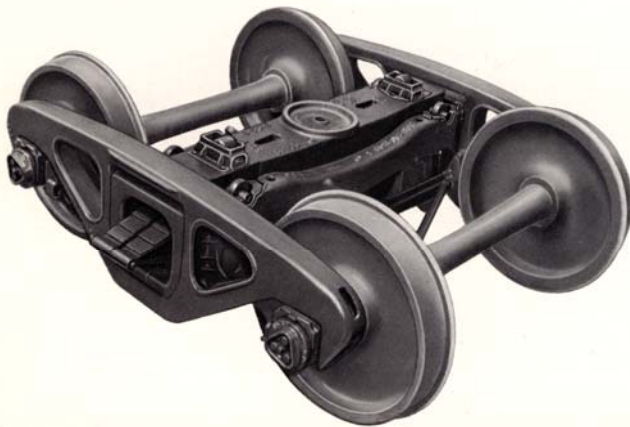


**the
Barber-Bettendorf[®]
Swing Motion
Caboose Truck**



Standard Car Truck Company

The "Total Design Concept" of the Barber-Bettendorf Swing Motion Caboose Truck gives smoother riding at high speeds on rough track & curves—and it costs less than any other caboose truck on the market!



The Barber-Bettendorf *Swing Motion* Caboose Truck is totally engineered to provide a smooth, well-cushioned ride under all conditions of modern railroading.

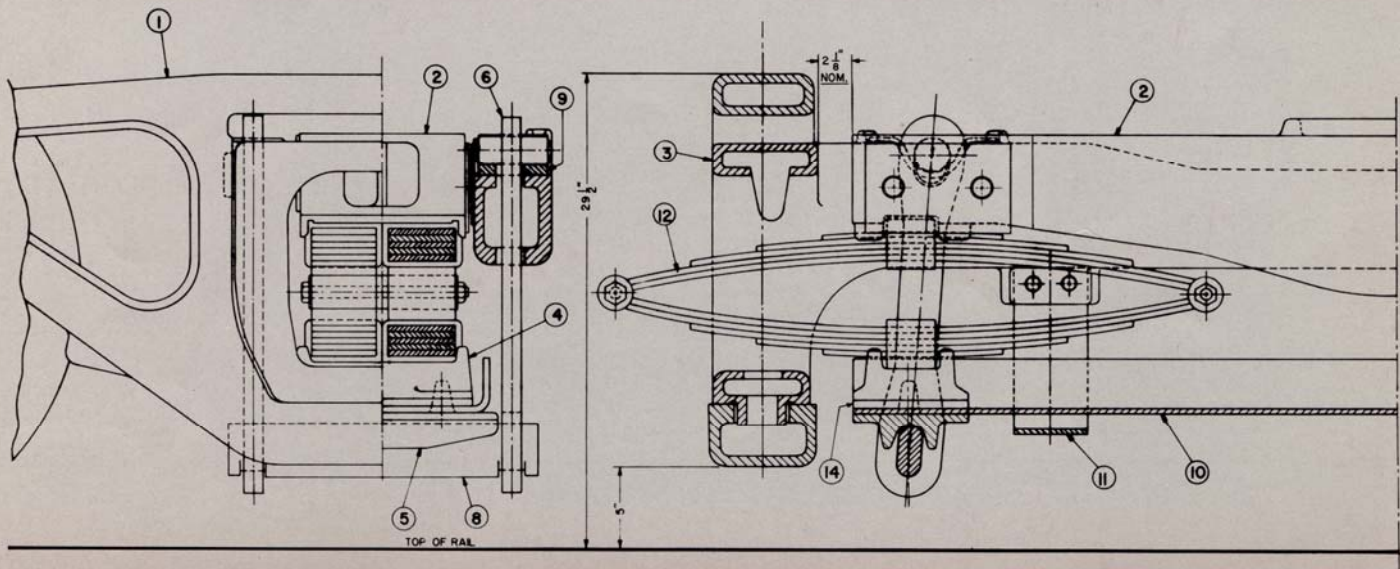
Riding comfort is obtained through use of a unique suspension system which has a passenger car type elliptical spring group carried on swing hangers. This provides a full floating ride.

How It Works

Long elliptical spring travel with constant load provides for passenger comfort. This free side-to-side swing of the bolster dissipates severe lateral shocks before they can be transferred to the body of the caboose. With most of the side shocks eliminated, the body of the car is brought gently back into line by the suspension system.

Safety

When lateral shocks and thrusts are adequately cushioned, damage and derailments are greatly reduced at high speeds, on curves and rough



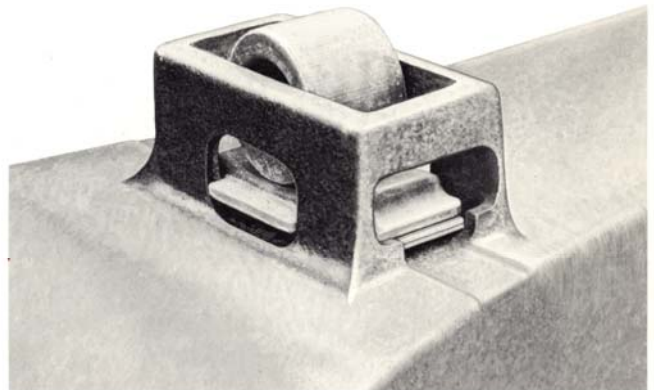
track. The *swing motion* softens the impact on wheel flanges and rails. Bouncing and rocking are also minimized.

Easy Installation

The simplified Barber-Bettendorf Caboose Truck contains the fewest possible parts. This makes installation, maintenance, assembly and component replacement easy to accomplish with a minimum of labor. Materials and construction comply with all pertinent A.A.R. specifications.

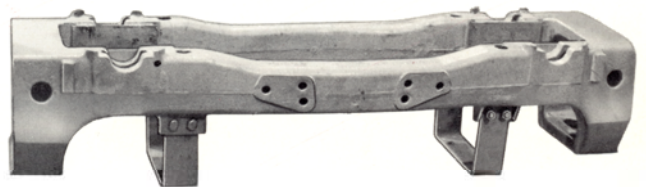
Low Maintenance Costs

The Barber-Bettendorf Caboose Truck is ruggedly constructed for dependable, heavy duty usage and long life. Side frames, bolsters and transoms are made of cast steel. Other parts are drop forged and heat treated for reduced wear and to cut costs of repair and parts replacement.



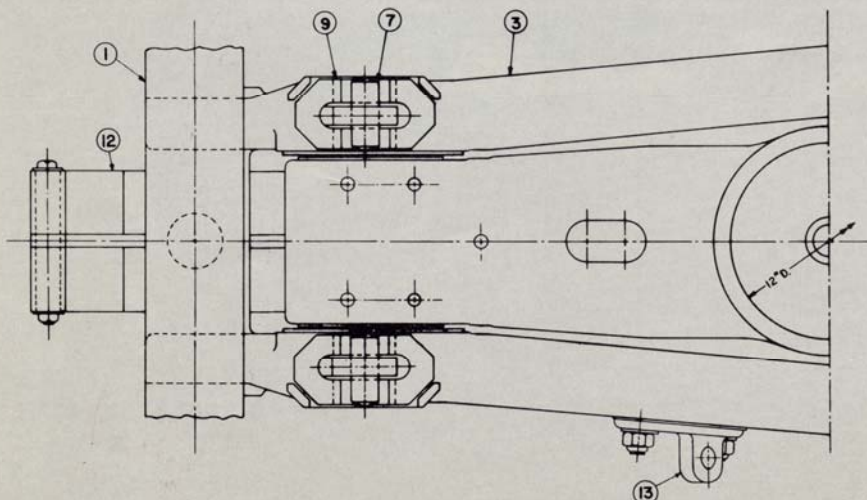
Side Bearings

The bolster can be furnished with Barber Monocast® Adjustable Side Bearings—or with the proper holes for attaching separate bearing housings.



Full Floating Ride

Efficient design one-piece transom houses elliptical passenger car type springs suspended from four off-center swing hangers.



ITEM NO.	NO. PER CAR	DESCRIPTION
1	4	SIDE FRAME
2	2	TRUCK BOLSTER
3	2	TRUCK TRANSOM
4	4	SPRING SEAT
5	4	SPRING PLANK BEARING
6	8	SWING HANGER
7	8	SWING HANGER TOP PIN
8	4	SWING HANGER BOTTOM BEARING
9	8	HANGER PIN BEARING PLATE
10	2	SPRING PLANK
11	4	SPRING PLANK SAFETY STRAP
12	4	DOUBLE ELLIPTIC SPRING
13	2	DEAD LEVER LUG (OPTIONAL)
14	4	½" SHIM (OPTIONAL)

More U.S. railroads are now using Barber-Bettendorf Caboose Trucks than any other design. They provide greater crew comfort, high safety factors at greater speeds on longer runs, and lower maintenance costs. They are also lower in first cost than any other caboose truck on the market. Barber-Bettendorf Caboose Trucks—the standard of the industry!

"Talk to the Man from Barber"



STANDARD
CAR TRUCK COMPANY

332 SOUTH MICHIGAN AVENUE
CHICAGO, ILLINOIS 60604, U.S.A.
TELEPHONE: 312/427-1466
CABLE: CARTRUCKS

Licensed throughout the World

