

Fig. 584—Cab View of a Locomotive Equipped with Electro Chemical Automatic Blowoff System. Signal Foam Meter Indicates Condition of the Water inside the Boiler.

Fig. 585—Exterior View of a Locomotive Equipped with Electro Chemical Automatic Blowoff System.

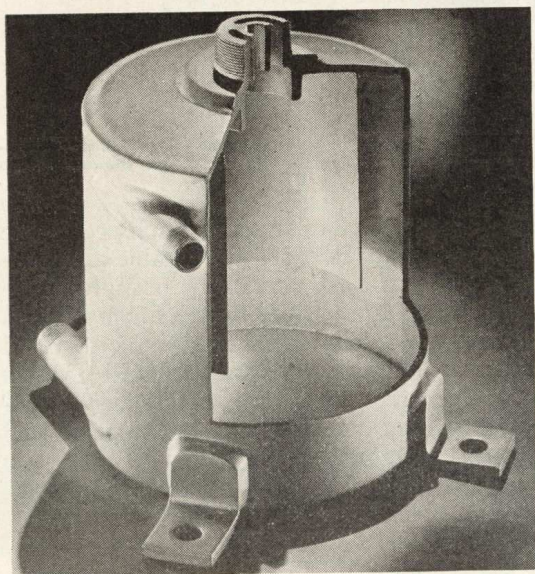
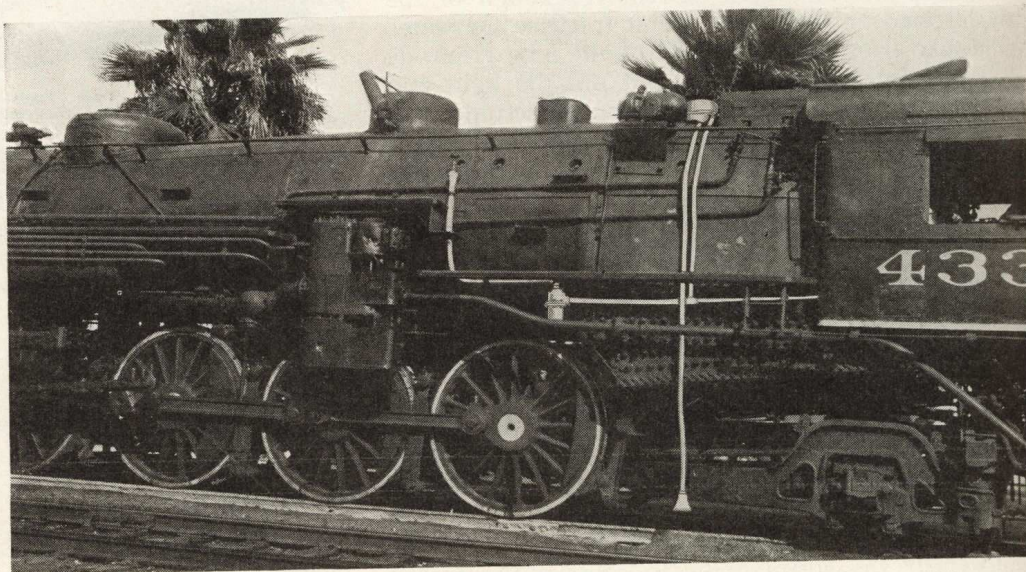


Fig. 586—(Left) Steam Separator Cut-Away to Show Construction. Used with Dearborn Automatic Constant Blowoff System.

Fig. 587—(Right) Blowing-Off Indicating Gage.



Electro-Chemical  
Engineering Corporation  
*Subsidiary of*  
Dearborn Chemical  
Company