

NATIONAL PNEUMATIC CO., INC.

125 Amory Street, Boston 19, Massachusetts

New York, Graybar Bldg.

Chicago, McCormick Bldg.

Manufactured in Canada by RAILWAY AND POWER ENGINEERING CORP., LTD.



DOOR CONTROL AND SAFETY EQUIPMENT FOR MASS TRANSPORTATION

MAGNET VALVES (Pressure-Type)

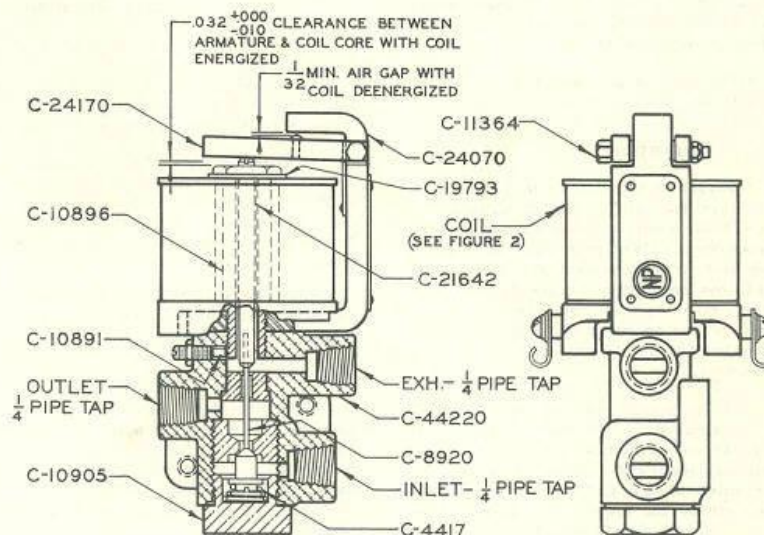


FIGURE 1

VOLTAGE	COIL NUMBER	MAGNET VALVE COMPLETE WITHOUT BRACKET
6	C-17390	C-44430
12	C-15540	C-26120
24	C-41430	C-44440
32	C-16630	C-43720
55-75	C-31670	C-43730
120	C-41950	C-43670

FIGURE 2

PART LIST

Part Numbers of Magnet Valves are identical with the exception of the coils. For part numbers of Coils, and numbers of complete magnet valves without brackets, (See Fig. 2).

C-4417	Spring	C-11364	Pivot Screw
C-8920	Valve & Stem	C-21642	Push Rod
C-10891	Plug	C-24070	Bracket & Spring
C-10896	Coil Core	C-24170	Armature Lever
C-10905	Cap Nut	C-44220	Valve Body & Seats