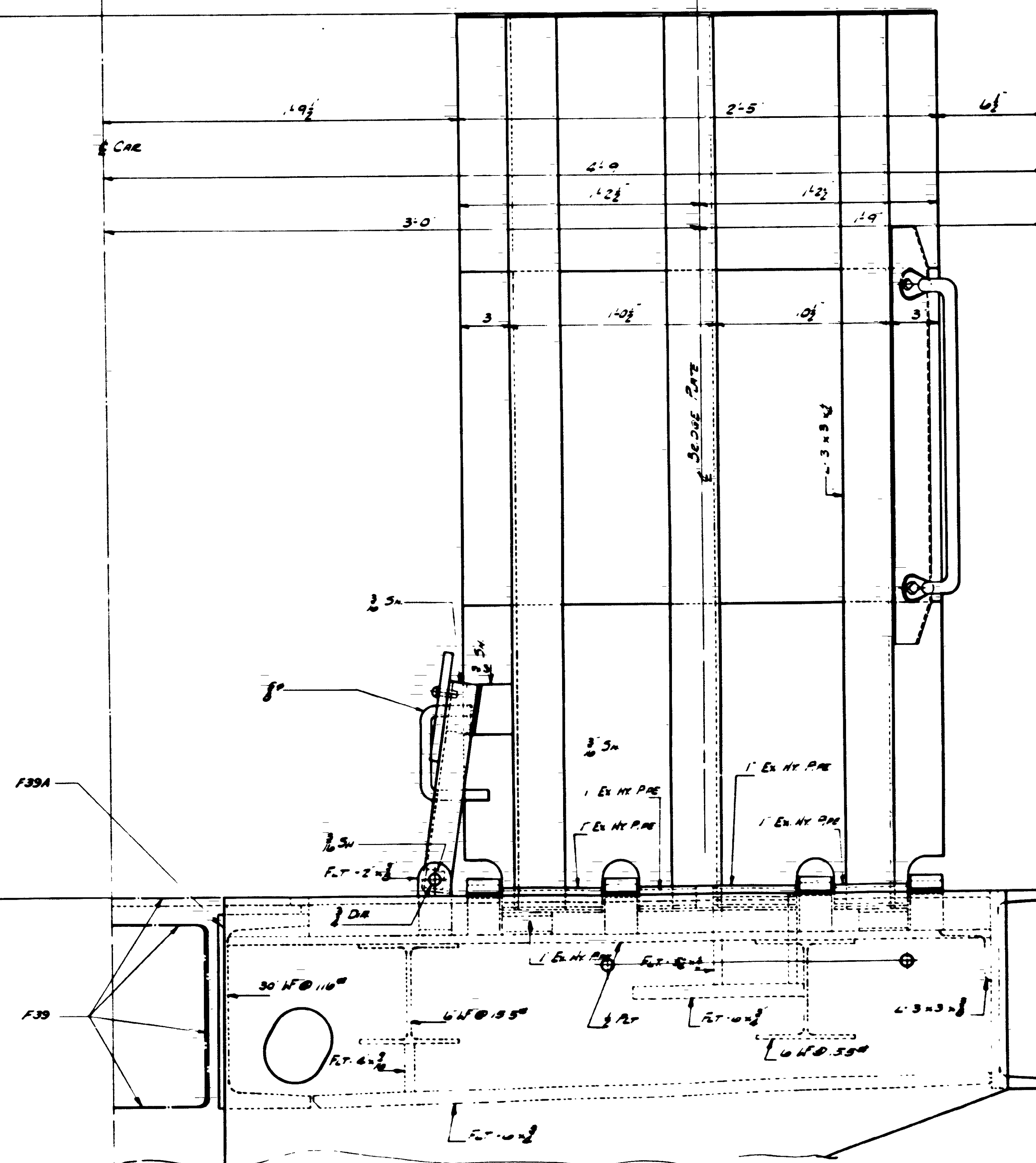
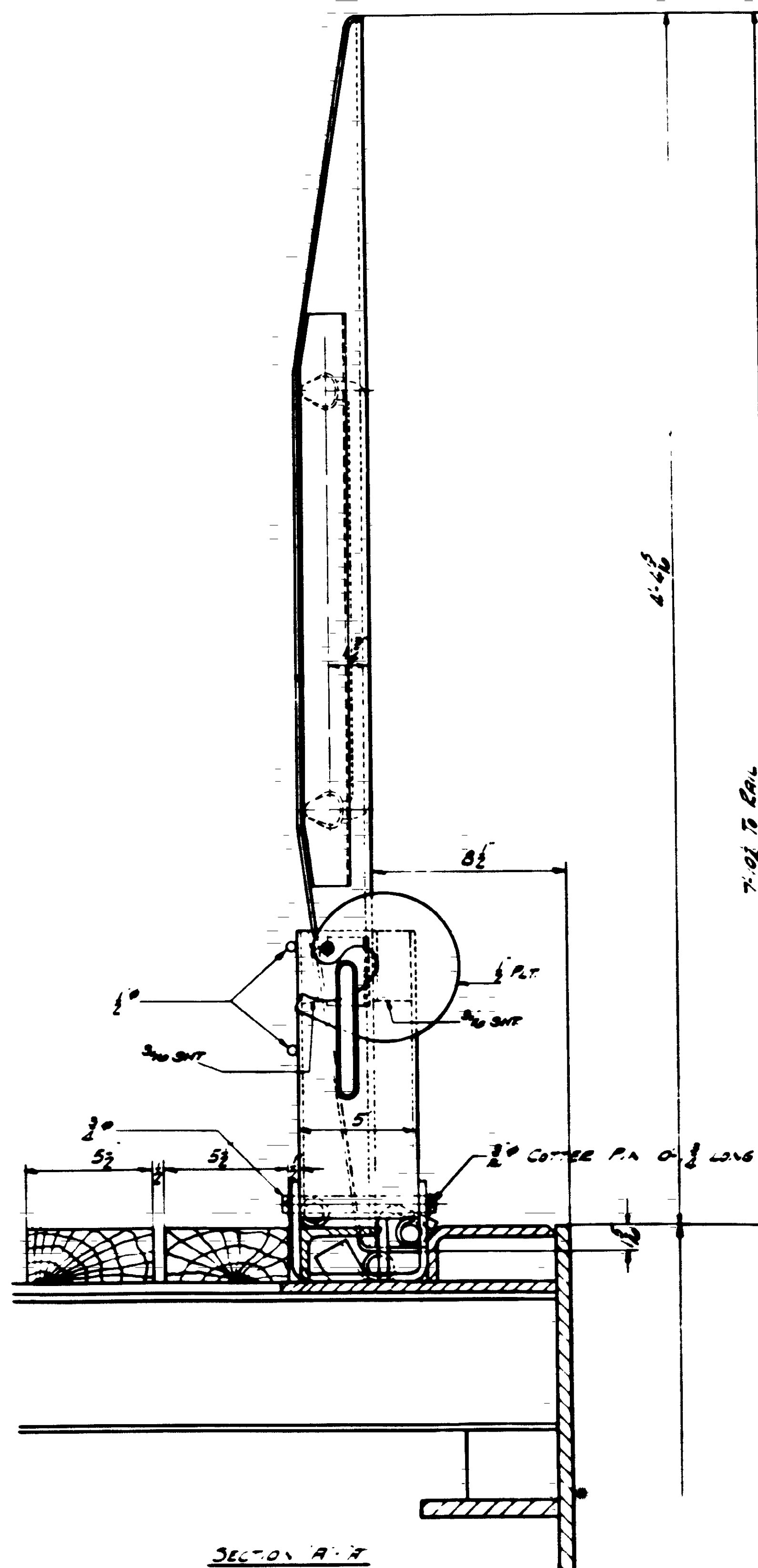
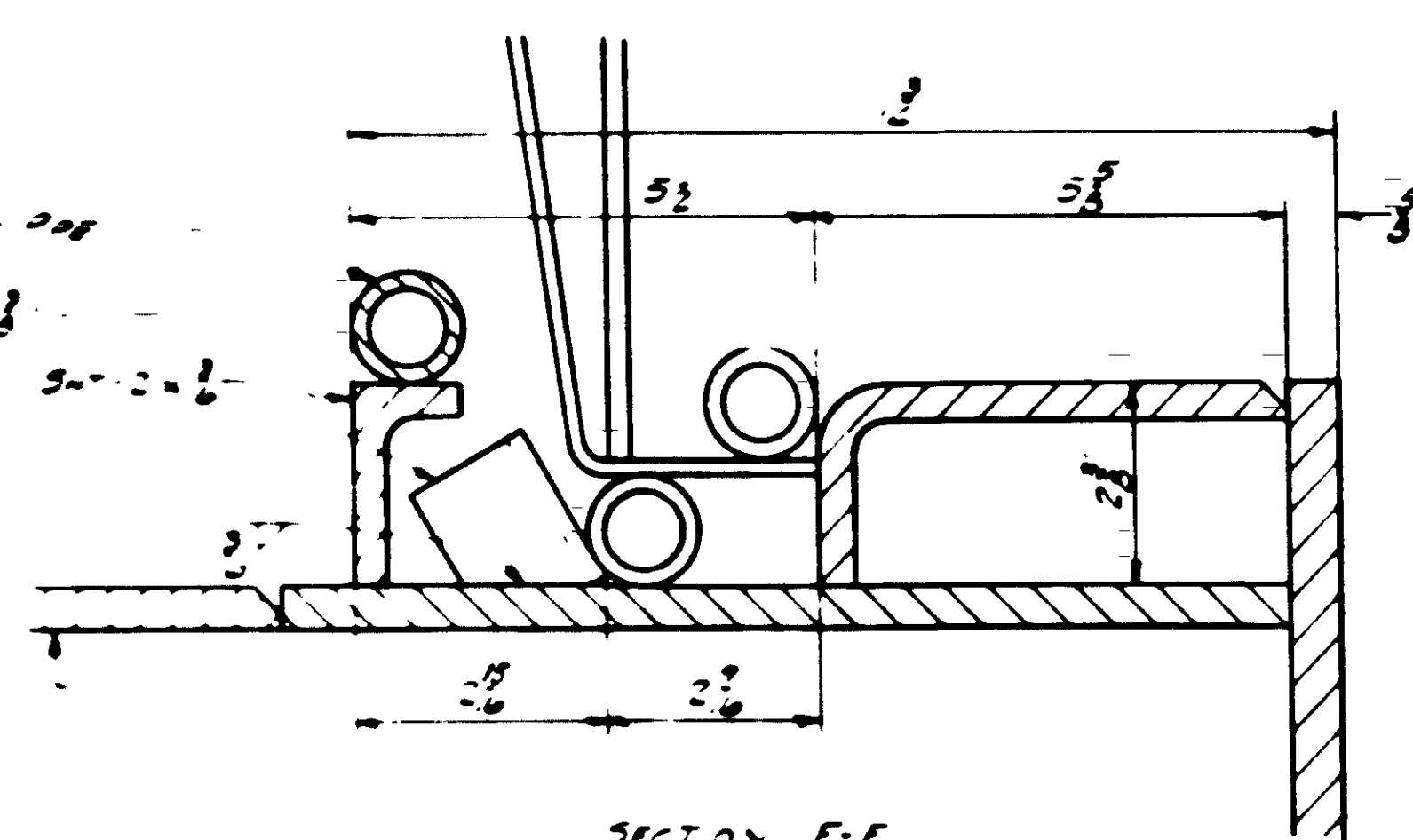
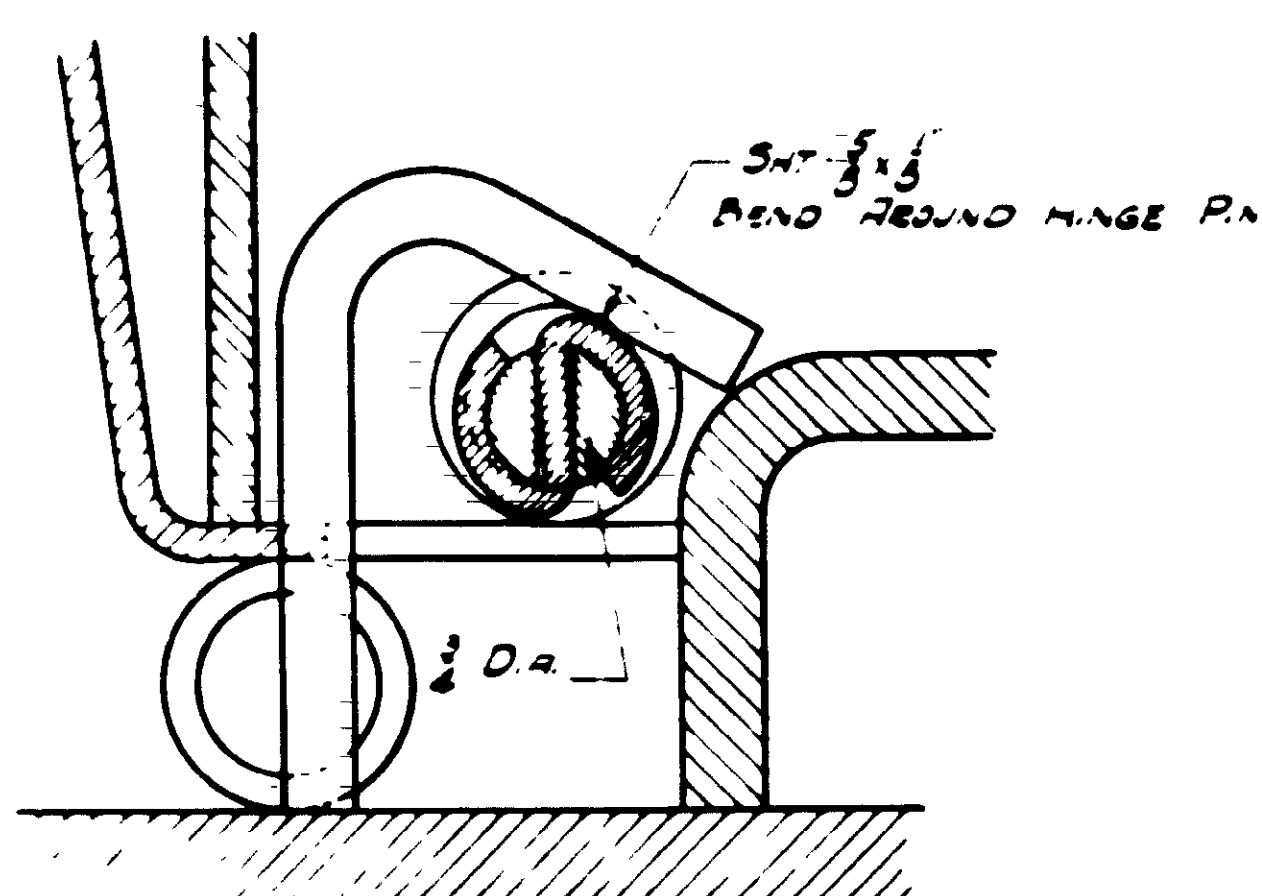
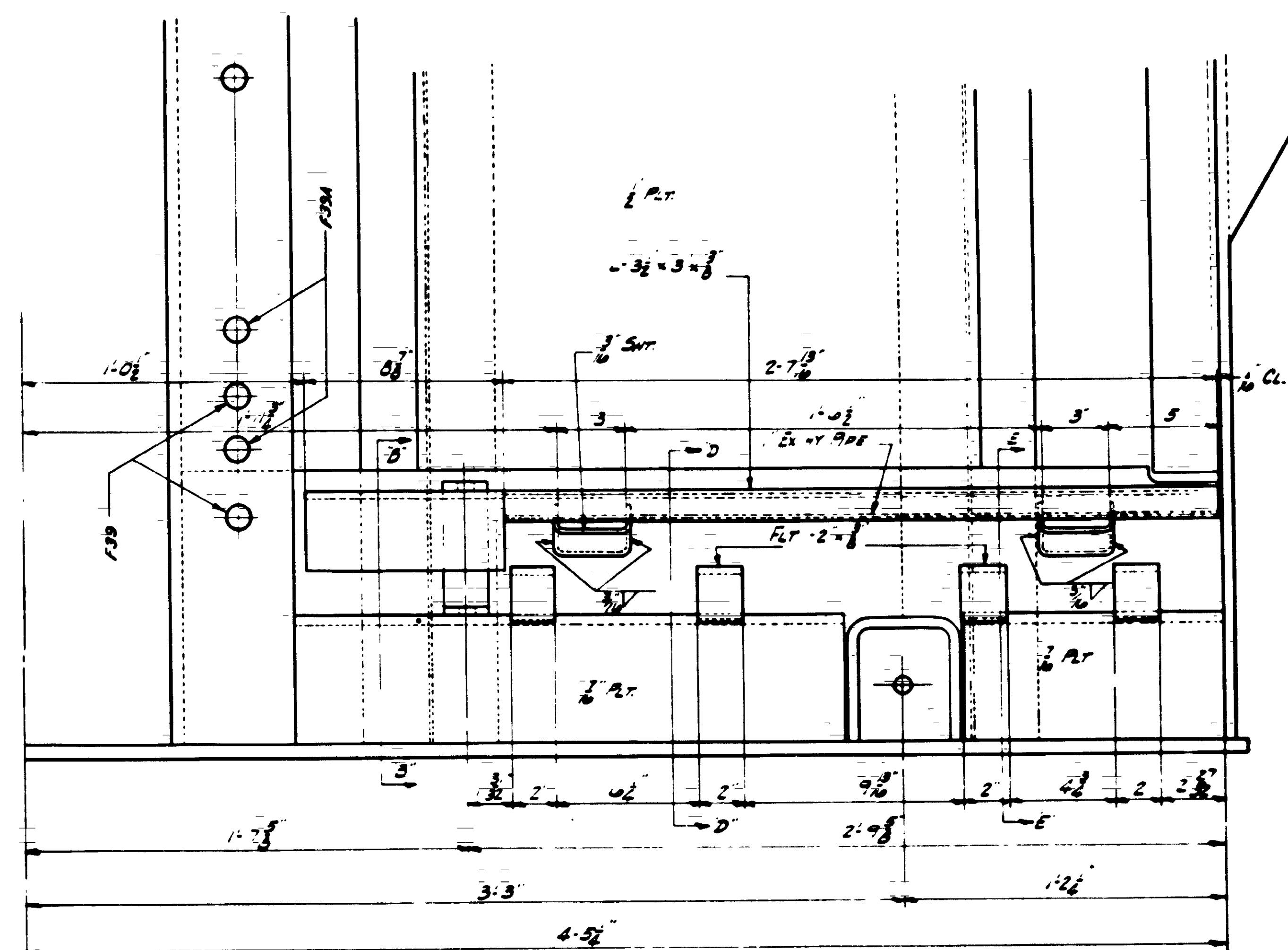
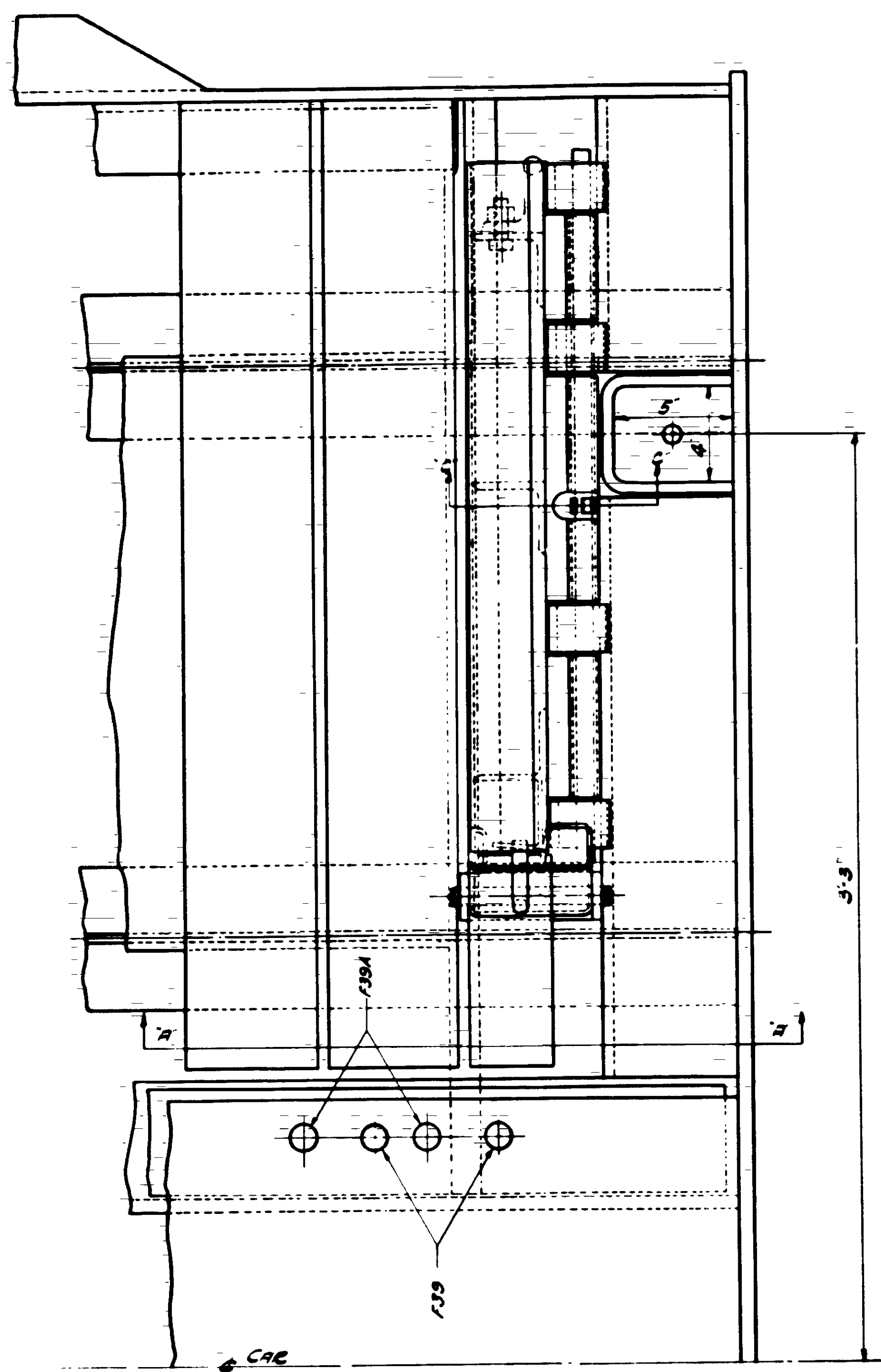
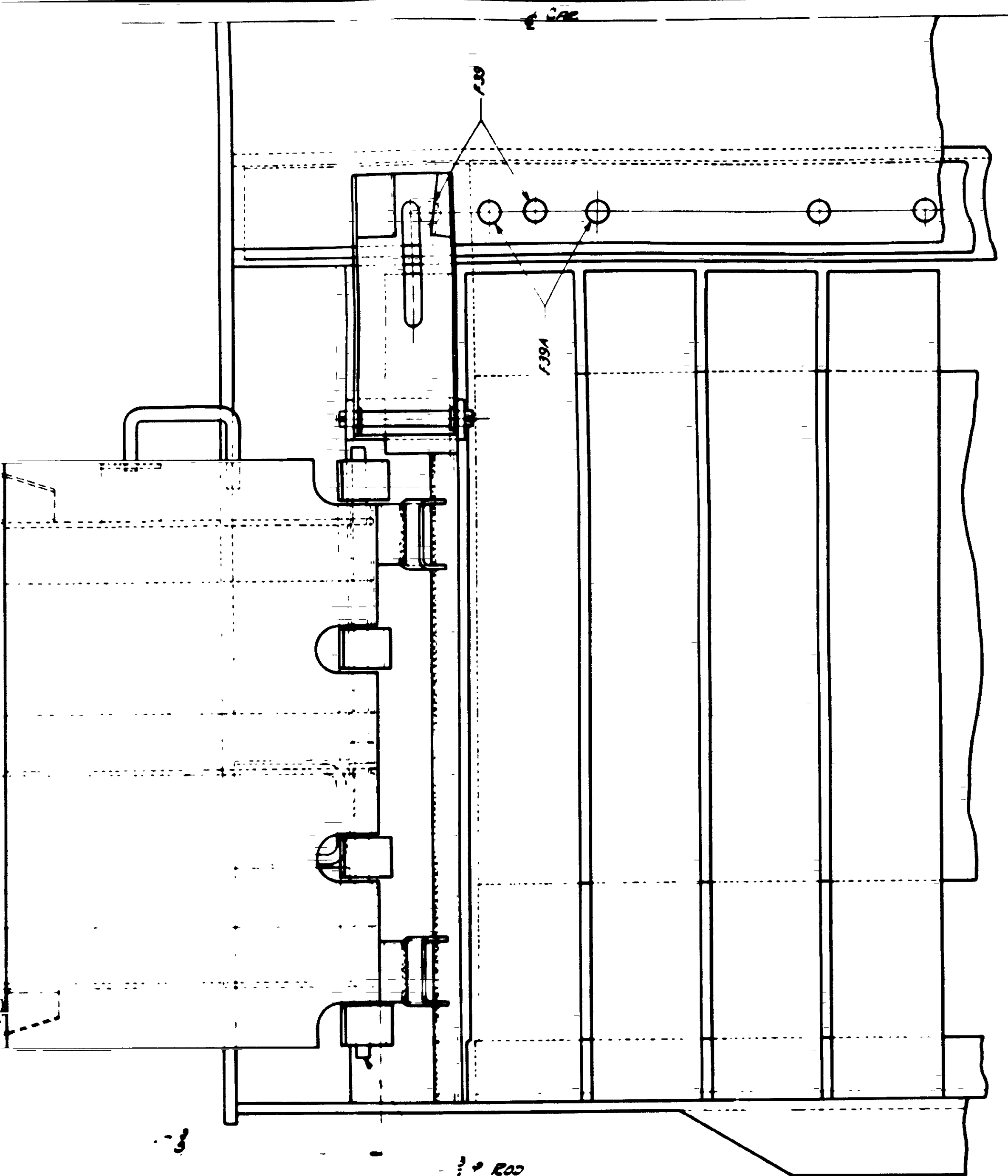


WELDING TO BE DONE BY THE SHIELDED METAL ARC METHOD. METAL ON WHICH WELDING METAL IS DEPOSITED MUST BE CLEAN AND DRY.



ISSUED - 5-24-55

F39 F39A

THE PENNSYLVANIA RAILROAD
FREIGHT CARS
BRIDGE PLATE
APPLICATION

W. C. PHILADELPHIA 4 4 35
ASST. VICE-PRES. OPERATION
AND CHIEF OF MOTIVE POWER
455349
MECHANICAL ENGINEER