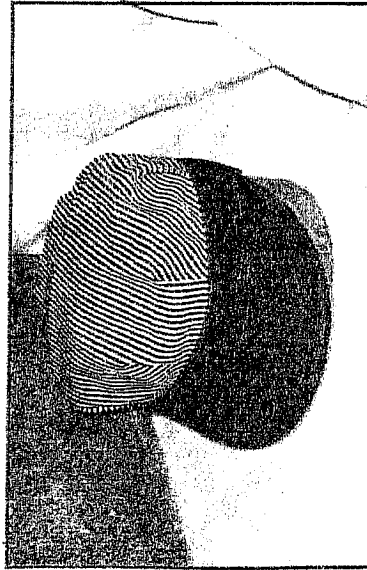


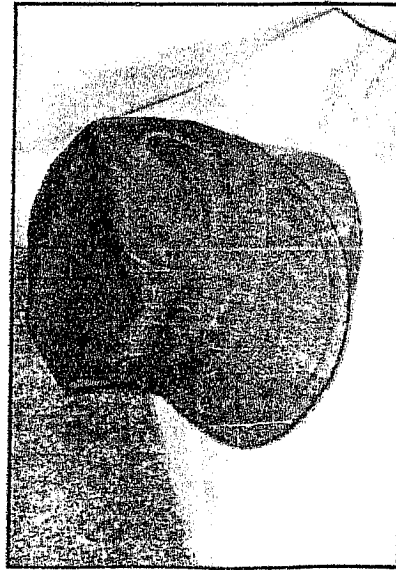
Moore Hats & Totes
1026 Dover Road
Charleston, ME 04422-3030
(207)285-7594

Moore Hats & Totes
1026 Dover Road
Charleston, ME 04422-3030

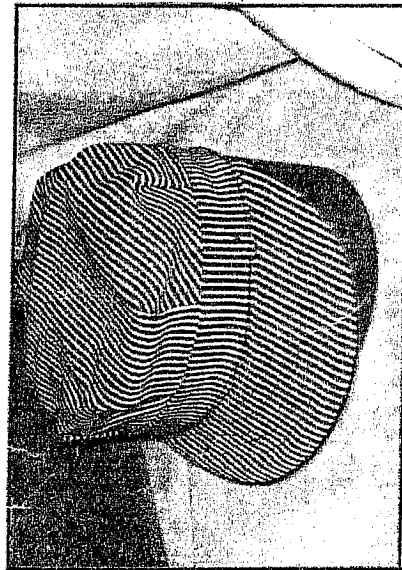
Blank grid for data entry					



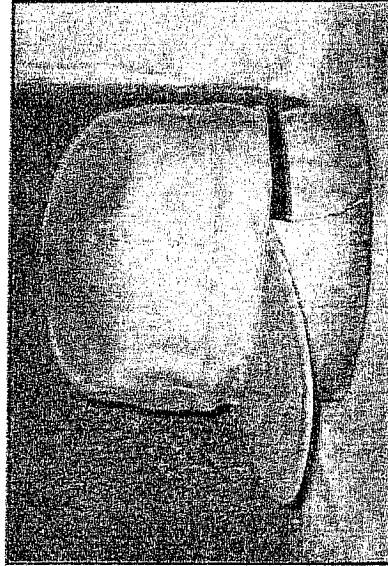
#1544W One piece tucked crown, flat topped in wide blue and white striped denim with contrasting band and visor



155 One piece tucked crown, flat topped, in solid blue denim



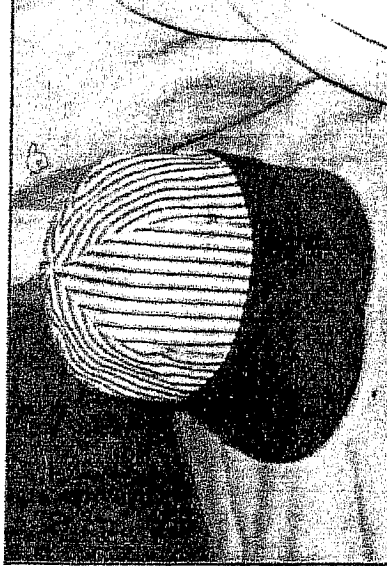
144W One piece tucked crown, flat topped, in wide blue and white striped denim



55C Winter cap with six piece corduroy crown, flannel lined, with ear flaps

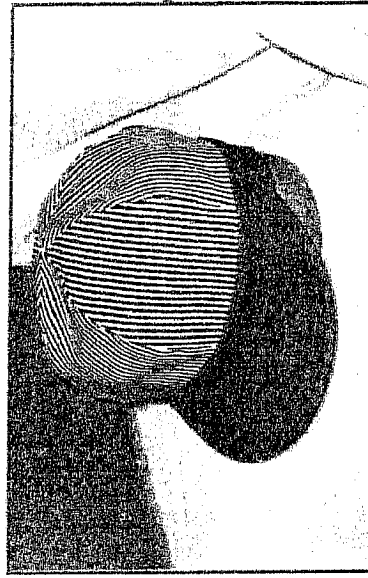


Twelve colors to choose from!
Please indicate your choice on the order form.

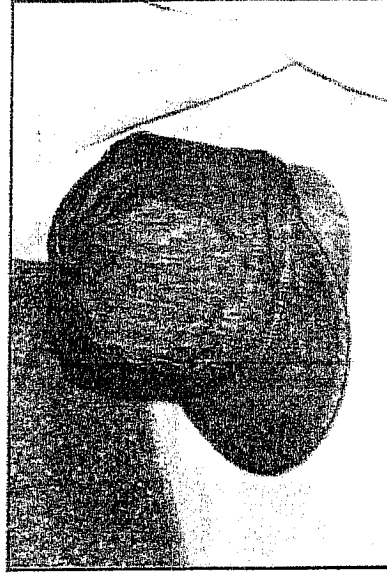


5513 Six piece high-topped crown, has extra wide blue and white stripes, with contrasting band and visor
154413 Same material, but one piece, tucked, and flat topped, like the 1544W

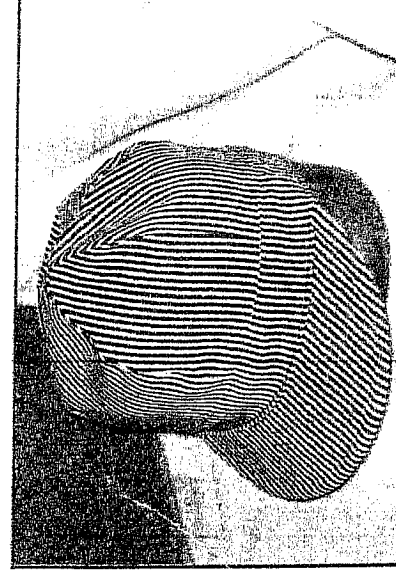
Moore Hats & Totes
1026 Dover Road
Charleston, ME 04422-3030
(207)285-7594



544W Six piece crown in wide blue and white striped denim, with contrasting band and visor



55 Six piece crown in solid blue denim or diekey cloth in assorted colors



44W Six piece high-topped crown in wide blue and white striped denim